

FG-SYS PANEL CHECKING PROCEDURES



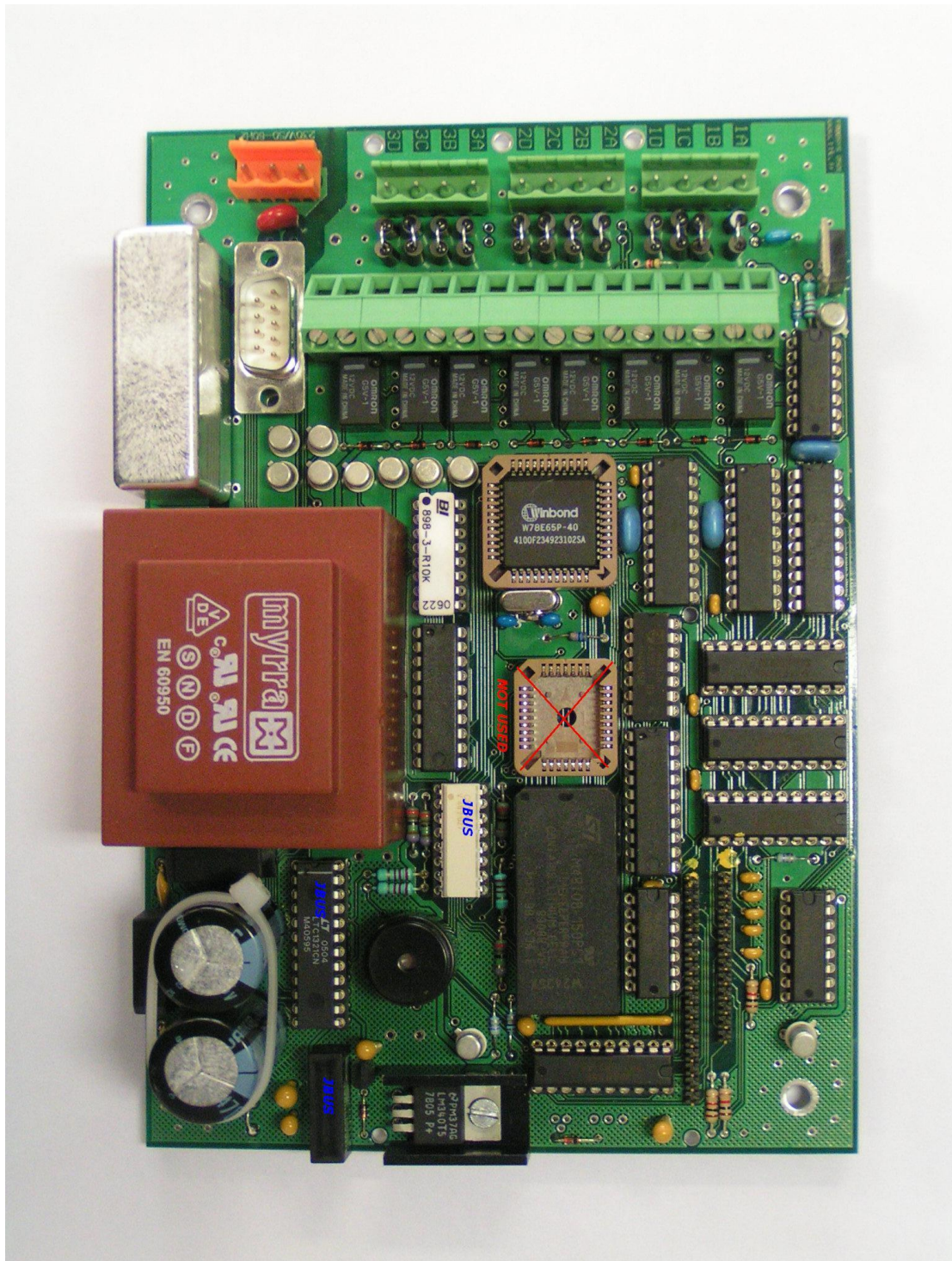
How to analyze if a FG-SYS panel is working or defective? Please follow below quick checking procedures.

Before all, please note that FG-SYS digital panel is a very robust instrument. Its role is to assemble information sent by sensing cables connected on it and avert the user. In general, we suggest check the cables before examine the panel.



1. Refer to below picture of FG-SYS PCB:

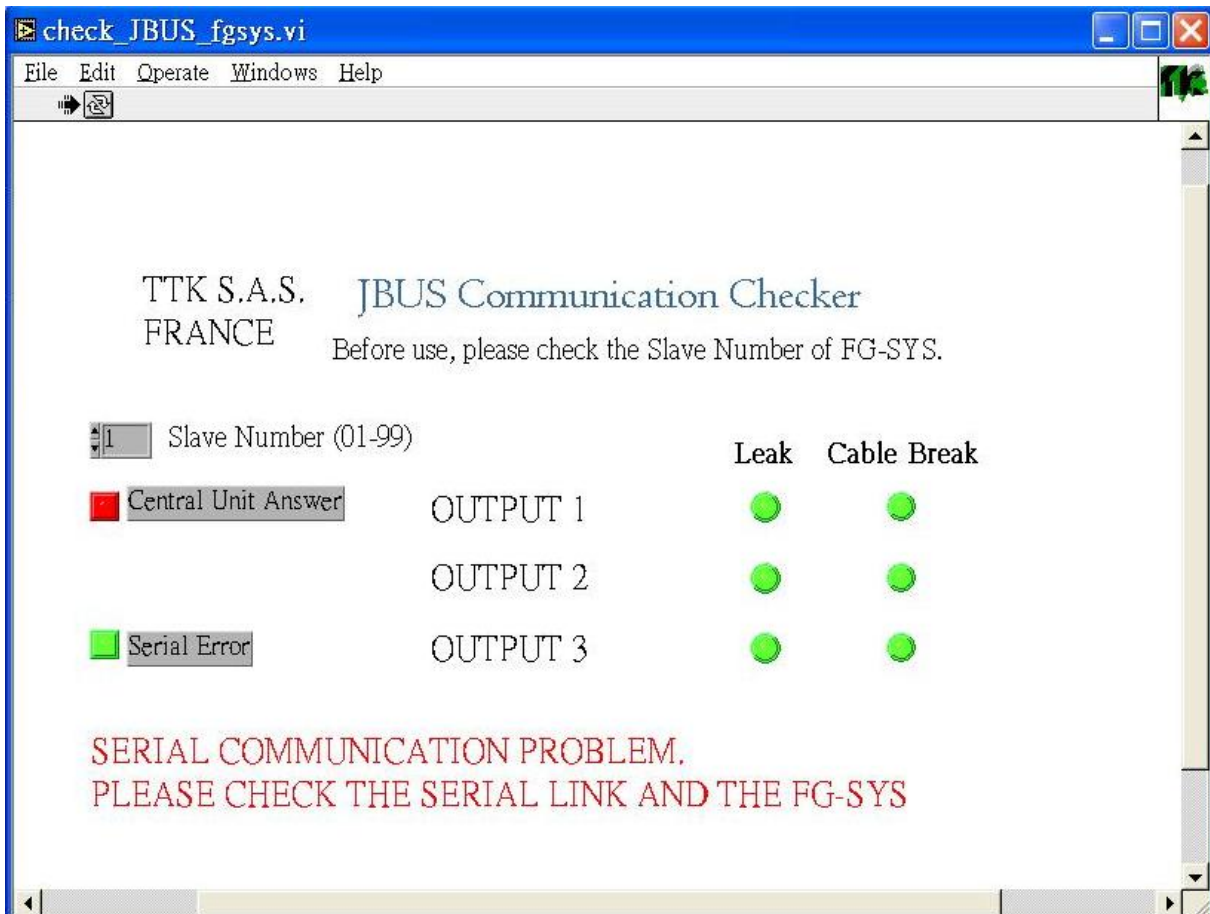
- check if all components are present on PCB of your FG-SYS panel;
- check if all components are securely soldered to PCB;
- pay particular attention to the components near the transformer.



2. Check the flat ribbon cable, make sure it is correctly connected, with the help of 2 yellow-points, as showed with red arrow on below picture.

3. MODBUS problem

Make sure slave N° (eg: 1) in the check JBUS corresponds to the N° in the FG-SYS menu (N°1).



The DB9 connector shall be connected as:

2----- 3

3----- 2

5-----5

Make sure the 3 MODBUS components are well installed:

- No pin foot has been broken
- In correct direction.