

PROCEDURE TO CREATE & UPLOAD MAPS INTO FG-NET PANEL



INTRODUCTION

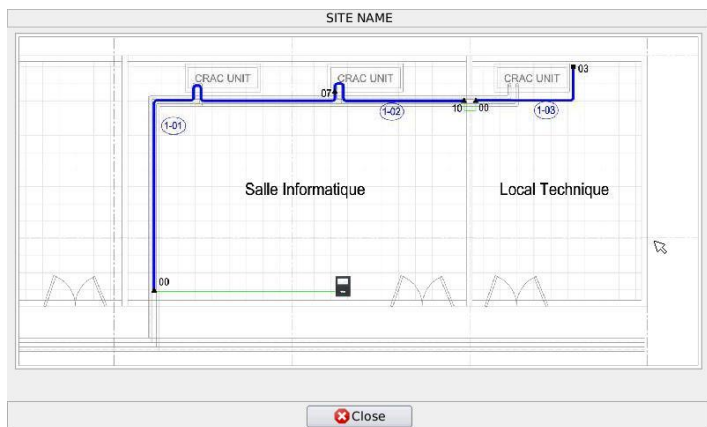
Before starting the procedure, please note that there are 2 kinds of maps stored in the FG-NET SD card: **Zone maps & Alarm maps**. Each map has a specific name so as to be displayed on the FG-NET touch screen when appropriate.

- **Zone Maps:** These maps can be displayed from the cable list menu. These are showing all cables in blue within a zone of associated cables as shown below:

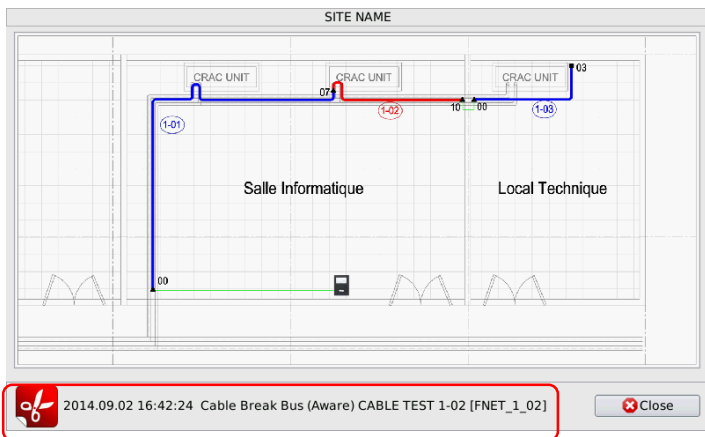
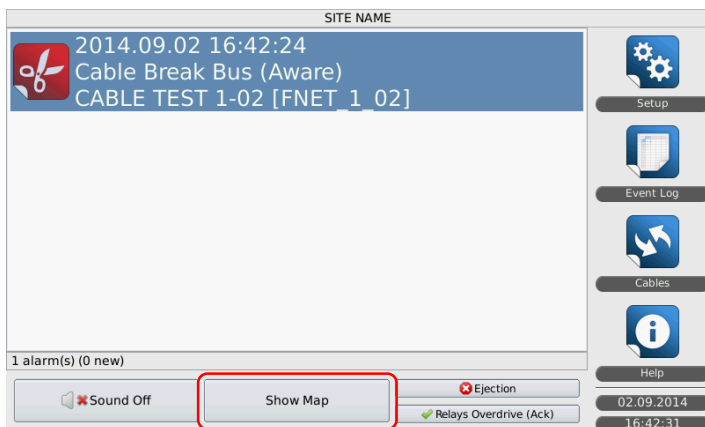
The screenshot shows the 'FG-NET Circuits' interface. At the top, there is a 'SITE NAME' dropdown and a 'Refresh' button. Below this, there are tabs for 'Circuit 1', 'Circuit 2', and 'Circuit 3'. The main area displays details for two cables. The first cable is 'DATA HALL' with a length of 3 m and 2 leak relays. The second cable is 'CABLE TEST 1-02' with a length of 3 m and 2 break relays. For each cable, there are buttons for 'Edit', 'Eject', and 'Map'. The 'Map' button for the first cable is highlighted with a red box.

And for FG-BBOX

The screenshot shows the 'FG-BBOX #1 FG-BBOX 1' interface. It has a 'Refresh' button and tabs for 'Circuit 1' and 'Circuit 2'. The main area displays details for two cables. The first cable is 'Cable 1' with a length of 3 m and 0 leak relays. The second cable is 'Cable 2' with a length of 15 m and 0 break relays. For each cable, there are buttons for 'Edit', 'Eject', and 'Map'.



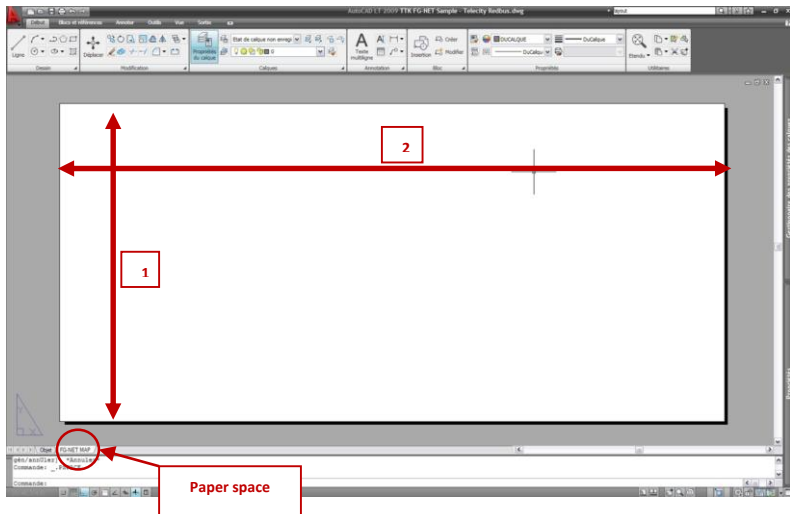
- **Alarm Maps:** These maps can be displayed from the alarm screen. These are showing the cables in alarm in red as shown below:



HOW TO CREATE FG-NET MAPS

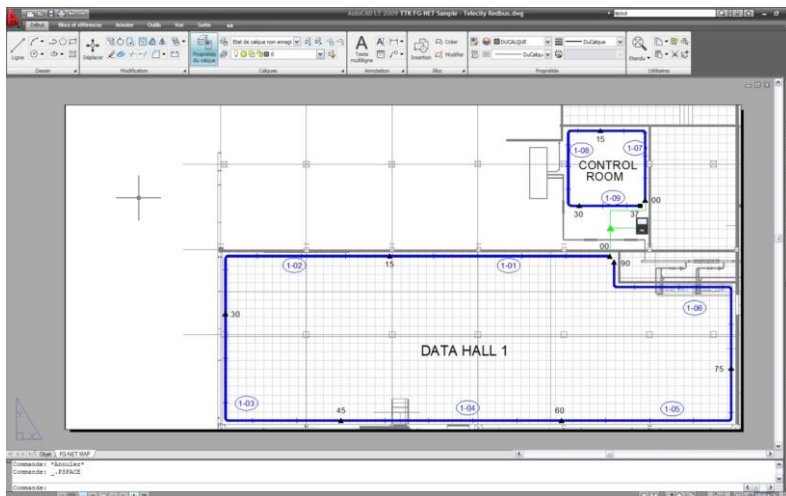
Step 1:

- Open the AutoCAD drawing
- In paper space, insert a new layout using a 2:1 ratio viewport window as shown below (1000mm x 500mm for example):

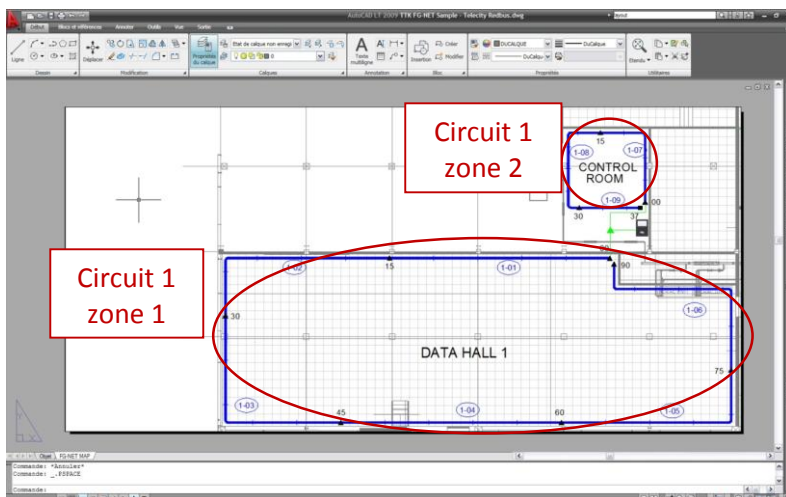


Step 2:

- For **Zone Maps**, zoom in the area you wish to display on the FG-NET touch screen as shown in the example below:



- Print the layout in PDF format (using CutePDF Writer for example)
- Zones with 2 or more cables: Please note that when 2 or more sense cables are associated, these only form one zone. The filename for each zone is according to the number of the first cable of the zone.
- Using our example, **zone 1** will be saved as 'zone-FNET_1_01.pdf' and **zone 2** as 'zone-FNET_1_07.pdf' as shown below:

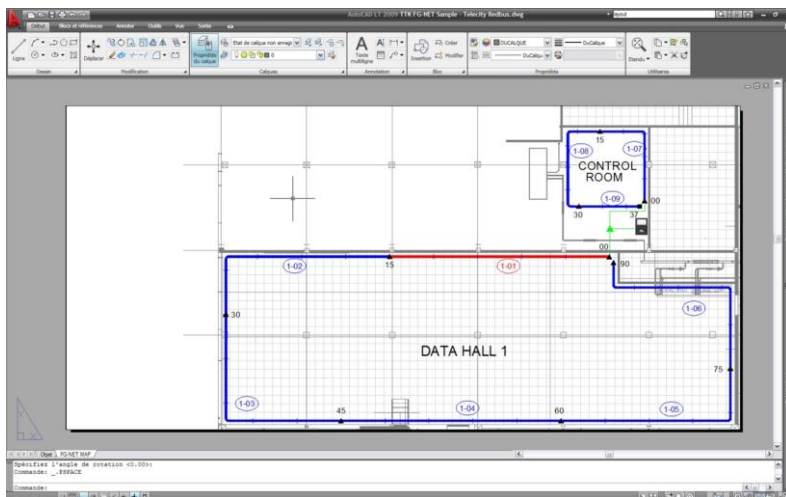


- Repeat previous steps for all the zones of the installation and save each file according to the table below:

ZONE MAPS		
FG-NET CIRCUIT 1	CABLE FNET_1_01	zone-FNET_1_01.pdf
	CABLE FNET_1_02	zone-FNET_1_02.pdf
	CABLE FNET_1_03	zone-FNET_1_03.pdf
	ETC...	ETC...
FG-NET CIRCUIT 2	CABLE FNET_2_01	zone-FNET_2_01.pdf
	CABLE FNET_2_02	zone-FNET_2_02.pdf
	CABLE FNET_2_03	zone-FNET_2_03.pdf
	ETC...	ETC...
FG-BBOX #1 CIRCUIT 1	CABLE BB01_1_01	zone-BB01_1_01.pdf
	CABLE BB01_1_02	zone-BB01_1_02.pdf
	CABLE BB01_1_03	zone-BB01_1_03.pdf
	ETC...	ETC...
FG-BBOX #2 CIRCUIT 1	CABLE BB02_1_01	zone-BB02_1_01.pdf
	CABLE BB02_1_02	zone-BB02_1_02.pdf
	CABLE BB02_1_03	zone-BB02_1_03.pdf
	ETC...	ETC...

Step 3:

- Similarly, for **Alarm Maps**, zoom in the area you wish to display on the FG-NET touch screen, highlighting cable FNET_1_01 in red as shown below:



- Print the layout in PDF format (using CutePDF Writer for example) and save the file as '*alarm-FNET_1_01.pdf*'
- Repeat previous step for each cable of the installation, naming each PDF file according to the table below:

ALARM MAPS		
FG-NET CIRCUIT 1	CABLE FNET_1_01	alarm- FNET_1_01.pdf
	CABLE FNET_1_02	alarm- FNET_1_02.pdf
	CABLE FNET_1_03	alarm- FNET_1_03.pdf
	ETC...	ETC...
FG-NET CIRCUIT 2	CABLE FNET_2_01	alarm- FNET_2_01.pdf
	CABLE FNET_2_02	alarm- FNET_2_02.pdf
	CABLE FNET_2_03	alarm- FNET_2_03.pdf
	ETC...	ETC...
FG-BBOX #1 CIRCUIT 1	CABLE BB01_1_01	alarm- BB01_1_01.pdf
	CABLE BB01_1_02	alarm- BB01_1_02.pdf
	CABLE BB01_1_03	alarm- BB01_1_03.pdf
	ETC...	ETC...
FG-BBOX #2 CIRCUIT 1	CABLE BB02_1_01	alarm- BB02_1_01.pdf
	CABLE BB02_1_02	alarm- BB02_1_02.pdf
	CABLE BB02_1_03	alarm- BB02_1_03.pdf
	ETC...	ETC...

Step 4:

- Convert the PDF files into PNG image files using a PDF to PNG converter software (for example: *Pdf to Png Converter 3000* available from allimagetool.com)
- The size of each image should not exceed 400 Ko with a resolution of **1600X800** so as to be handled easily by the FG-NET software. Reduce the size of each file as necessary (using Microsoft Office Picture Manager for example).

HOW TO UPLOAD FG-NET MAPS

- Insert the FG-NET SD memory card into your computer's SD card drive.
- Copy the PNG files into the SD card, under the existing "maps" folder, replacing all existing demo files within the folder.
- Insert the SD card back into the FG-NET SD card drive.
- Your FG-NET is ready for use.

FG-NET MAPS LICENSE

A license is needed to unlock the FG-NET Maps feature.

The license code must be entered in the general settings of the panel.

If no license code is entered, the panel will show the embedded demonstration maps for the first three cables only.

EXAMPLE

Let's take an example of an installation made of 10 cables installed in 4 different rooms.

This is the Maps list that you will need in FG-NET considering that sense cables are associated in the “Architecture” tab of the setup.

If the cables are not associated, you will need a Zone Map for each sense cable.

Cables	Cable Names (Zones)	Alarm Maps	Zone Maps
FNET_1_01	Data Hall	alarm-FNET_1_01.png	zone-FNET_1_01.png
FNET_1_02	----- (Associated)	alarm-FNET_1_02.png	----- (No Map)
FNET_1_03	----- (Associated)	alarm-FNET_1_03.png	----- (No Map)
FNET_1_04	----- (Associated)	alarm-FNET_1_04.png	----- (No Map)
FNET_1_05	Network Room	alarm-FNET_1_05.png	zone-FNET_1_05.png
FNET_1_06	----- (Associated)	alarm-FNET_1_06.png	----- (No Map)
FNET_1_07	Battery Room	alarm-FNET_1_07.png	zone-FNET_1_07.png
FNET_1_08	UPS Room	alarm-FNET_1_08.png	zone-FNET_1_08.png
FNET_1_09	----- (Associated)	alarm-FNET_1_09.png	----- (No Map)
FNET_1_10	----- (Associated)	alarm-FNET_1_10.png	----- (No Map)