

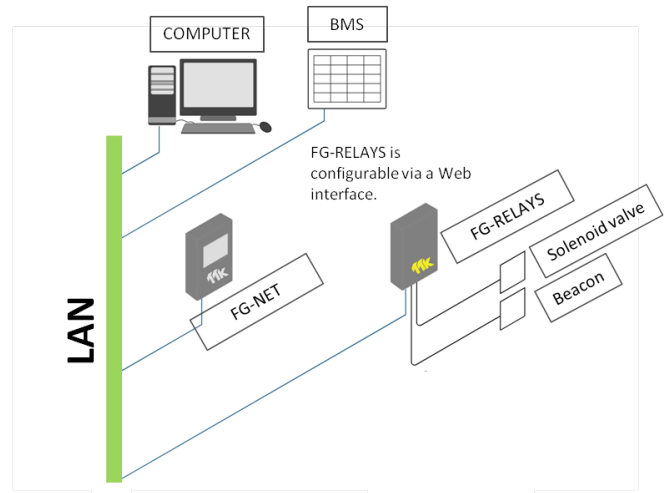


# FG-RELAYS Web Interface



## Introduction

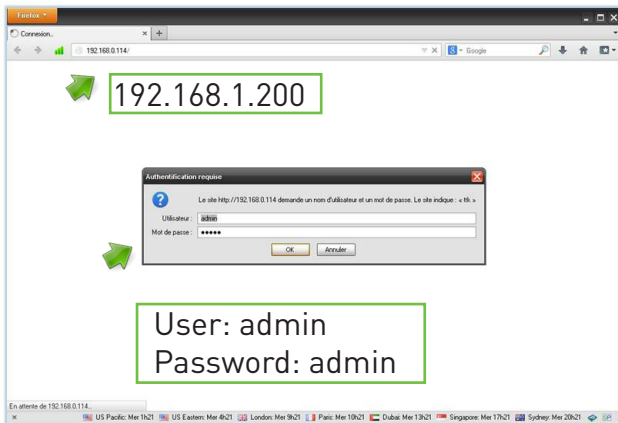
- The FG-RELAYS is an external relays box of the FG-NET Digital Unit. It adds a set of 24 configurable external relays to the FG-NET. The FG-RELAYS is monitored by FG-NET via a standard Ethernet network.
- FG-RELAYS can be configured remotely on a computer (windows, Linux or Macintosh exploitation system).



Connection diagram of FG-NET, FG-RELAYS, PC and BMS in a Network.

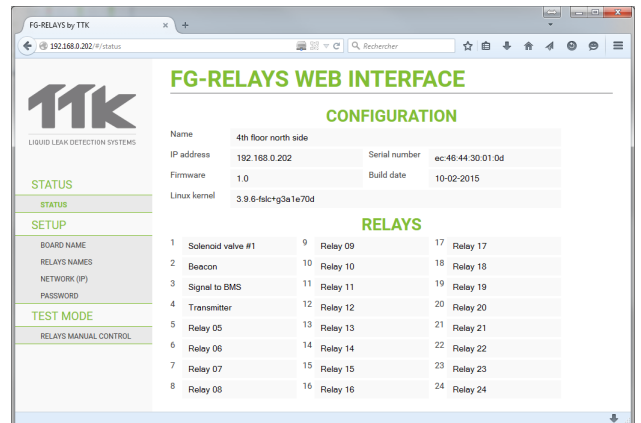
## 1 IP Setting of FG-RELAYS

- Connect a computer to FG-RELAYS through an existing network, or make a direct connection with a crossover cable and manual IP set on the computer using those settings:
  - **Computer IP: 192.168.1.200**
  - **Netmask: 255.255.255.0**
  - **Gateway: 192.168.1.100**
- Open a web browser (Firefox is recommended) and enter the FG-RELAYS default IP in the address bar (**192.168.1.200**). FG-RELAYS will prompt for login/password, enter **"admin"** and **"admin"**.



## 2 'STATUS' Menu

- The menu **"Status"** on FG-RELAYS Web interface gives a general view of the FG-RELAYS's configuration and its real time status: all connected relays' status will be displayed on this interface. All data under this menu is generated automatically by the system.

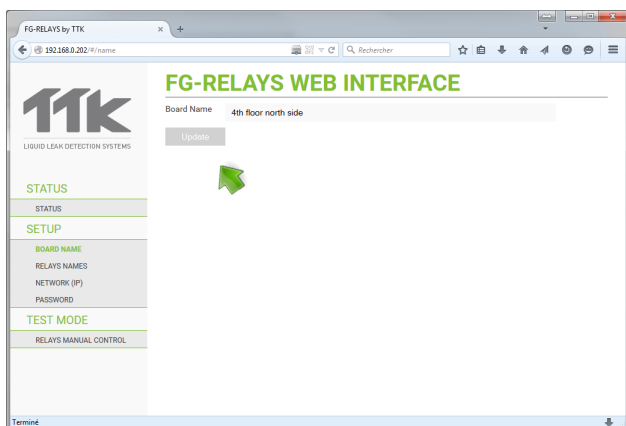


CONFIGURATION → FG-RELAYS unit's system information.

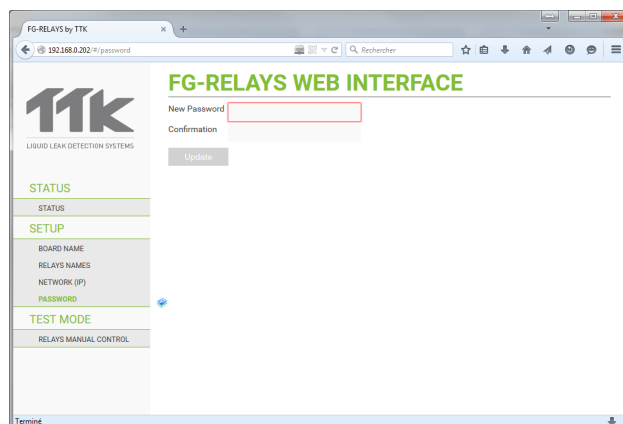
RELAYS → Details of all connected relays on the FG-RELAYS unit.

### 3 'SETUP' Menu

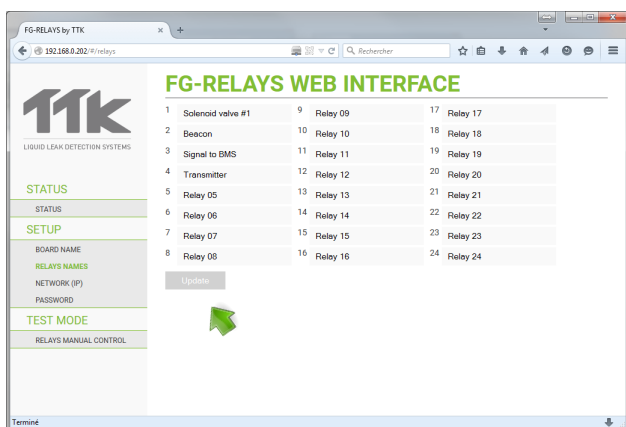
- Under "Setup" menu: "Board Name" is the name of the concerning FG-RELAYS unit. It can be renamed by the user.



- "Setup" > "Password": the user can modify the default password. The same password will be needed on FG-NET unit in order to connect with the FG-RELAYS, for 'paring' function.

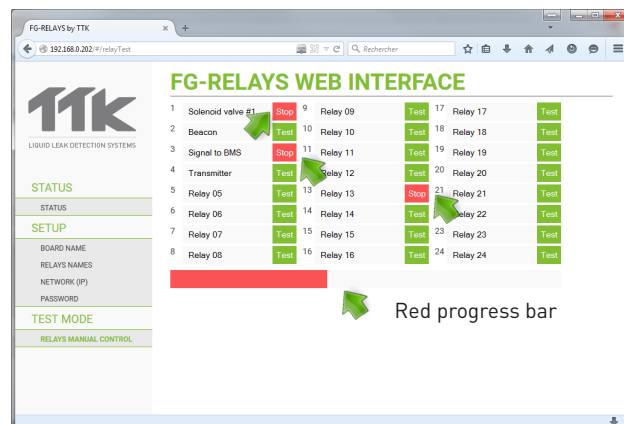


- "Setup" > "Relays Names": all connected relays will be detected automatically by FG-RELAYS. "Update" button allows refreshing the relay list.



### 4 'TEST MODE' Menu

- "Test Mode" > "Relays Manual Control" allows taking the control of the connected relays. For example, in the below case, Relays 1, 3 and 13 have been tested.
- The red progress bar is a 5 minutes temporization for the test simulation. After 5 minutes, all the tests will be automatically reset.
- Press on the green button "Test" to start a test; to end it, press on the red button "Stop".



- "Setup" > "Network (IP)": Network configuration interface, including IP address, Netmask and Gateway.

