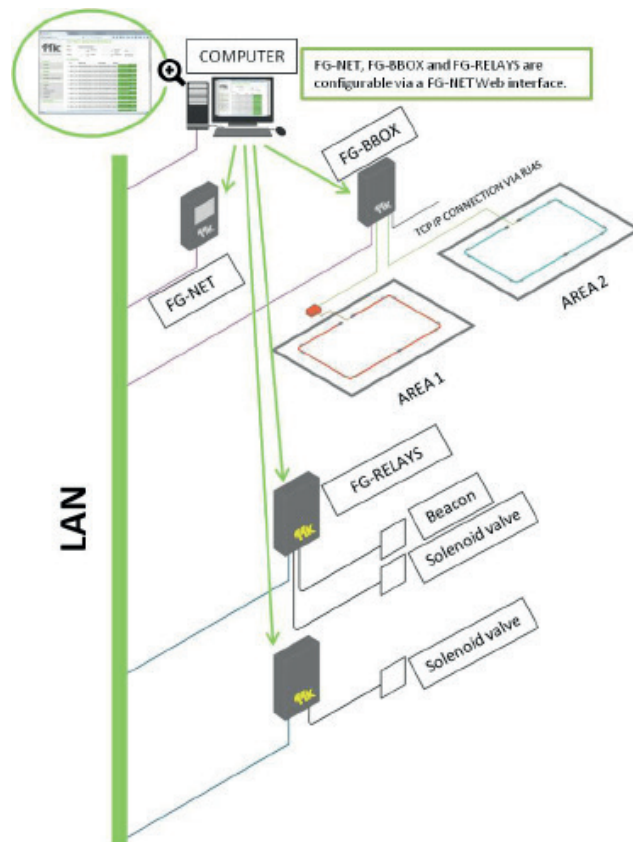




FG-NET Web Interface



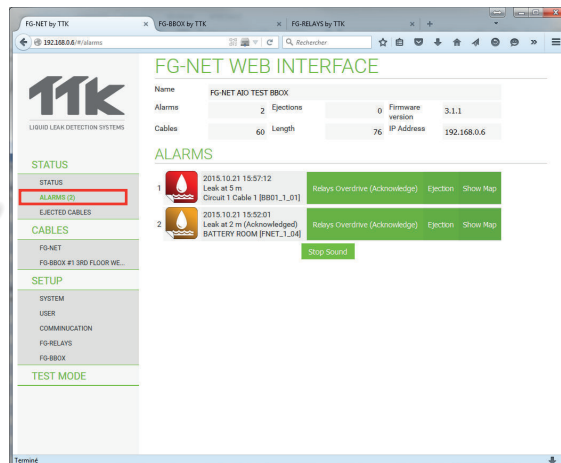
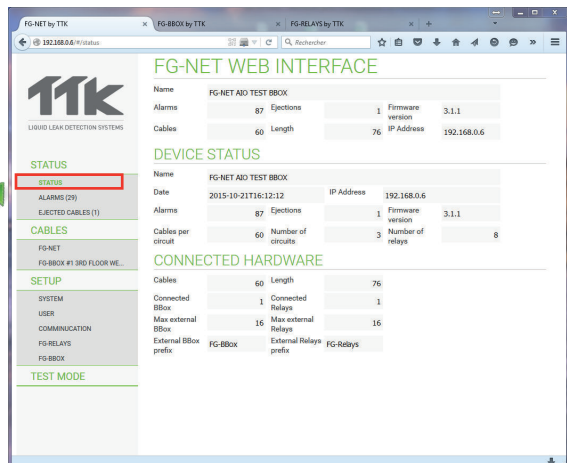
Connection diagram of FG-NET, FG-BBOX, FG-RELAYS and a PC in a Network

Introduction

- The FG-NET digital unit can be fully configured via its touch screen. It can be also viewed, configured and controlled remotely on a connected computer via FG-NET Web Interface.
- The FG-BBOX and FG-RELAYS are external devices of FG-NET. They are monitored by FG-NET via a standard Ethernet network. They can be configured and their real-time status can be viewed via the interface.

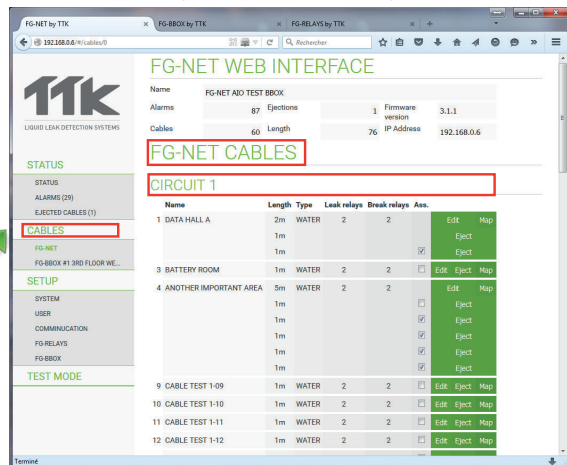
1 'STATUS' Menu

- FG-NET web interface consists of four main menus: Status, Cables, Setup and Test Mode.
- Menu 'Status' > 'Status': can view information about the system and installation. For example, the name of the panel, the number of connected cables, the number of alarms, the total length detectors, firmware version and IP addresses of the panel.
- Menu 'Status' > 'Alarms': allows to see the current alarms list and to take quick actions related to these alarms.
- Detailed information about alarms is shown in this menu: alarming date and time, type of fault (leak or cable break), alarming cable ID (FNET_circuit n°_cable n°). User can take different actions such as 'aware alarm', 'acknowledge alarm', 'stop sound' or 'ejection'.

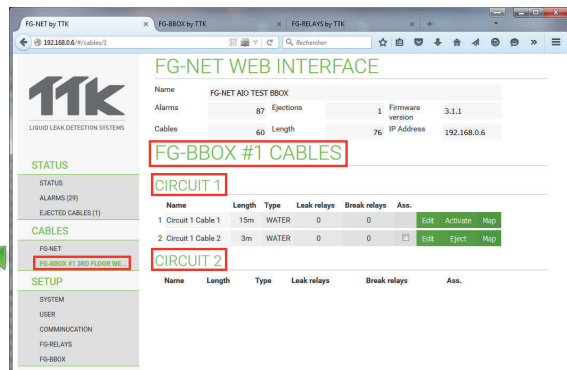


2 'CABLES' Menu

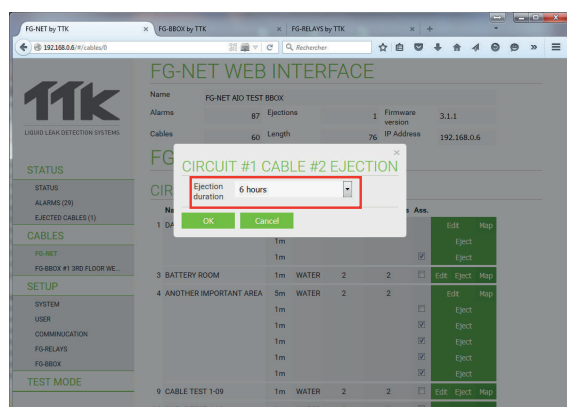
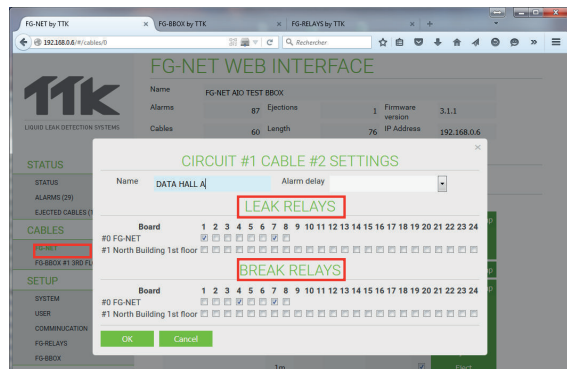
- Menu **'Cables' > 'FG-NET'**: This menu lists the installed cables on three circuits on each FG-NET. Name and length of each cable, as well as the related leak and cable break relays are listed. User can configure each cable (associate, eject, edit or view it on map) via buttons.



- Menu **'Cables' > 'FG-BBOX'**: When FG-BBOX are connected to FG-NET, the list of cables on every FG-BBOX will be shown under this sub-menu 'FG-BBOX #n' and name of BBOX.

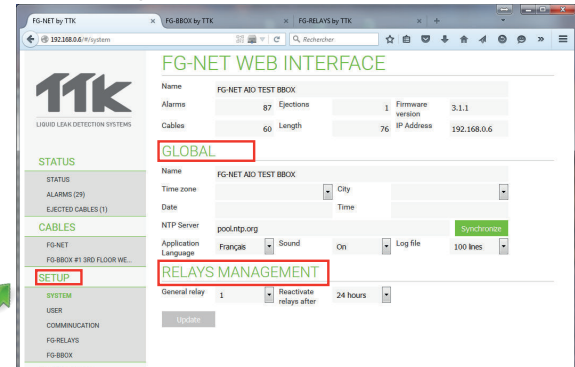


- Menu **'Cables' > 'FG-BBOX'**: rename cable, configure both internal (on FG-NET) and external (on FG-RELAYS) relays, temporisation, can be done under this menu.

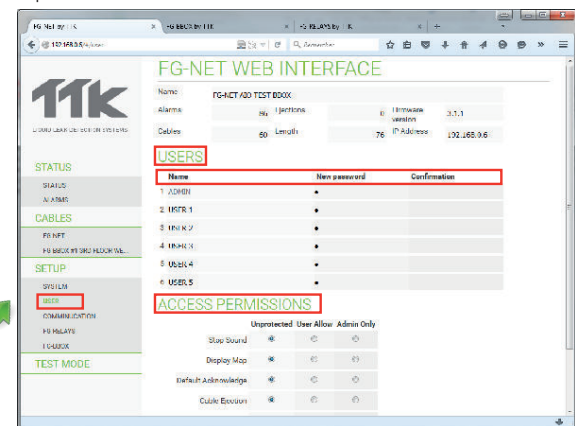


3 'SETUP' Menu

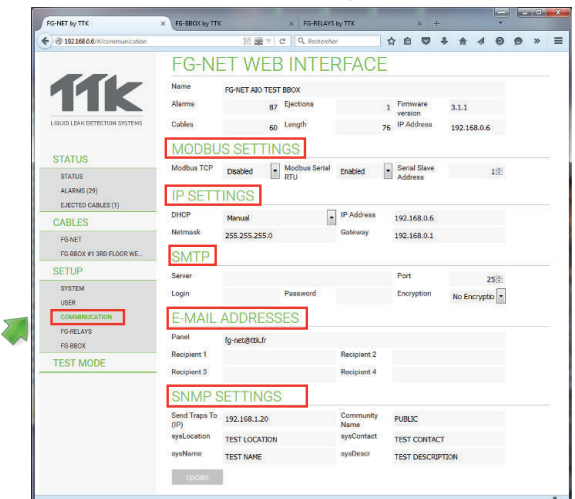
- Menu **'Setup'**: This menu is a replication of the tabs presented in the configuration menu of the FG-NET panel. It includes 'System', 'User', 'FG-RELAYS' and 'FG-BBOX'.
- Menu **'Setup' > 'System'**: It contains global information of the panel and relays management.



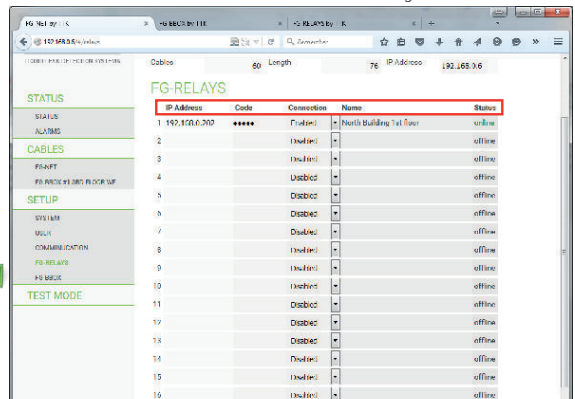
- Menu **'Setup' > 'User'**: This menu allows configuring passwords and access permissions of each user.



- Menu **'Setup' > 'Communication'**: This menu allows setting up Modbus, IP, SMTP, e-mail address and SNMP settings on the FG-NET panel.



- Menu **'Setup' > 'FG-RELAYS' / 'FG-BBOX'**: The real-time status of every FG-RELAYS / FG-BBOX can be viewed and configured in this menu.



4 'TEST MODE' Menu

- Menu **'Test Mode'**: This menu includes two built-in tools 'FG-NET Alarm Generator' and 'FG-NET Cable Simulator', they allow easy alarm testing and simulation without the need for physical cables.

■ FG-NET Cable Simulator

This tool allows you to simulate sense cables without physically connecting any cables to the FG-NET panel.

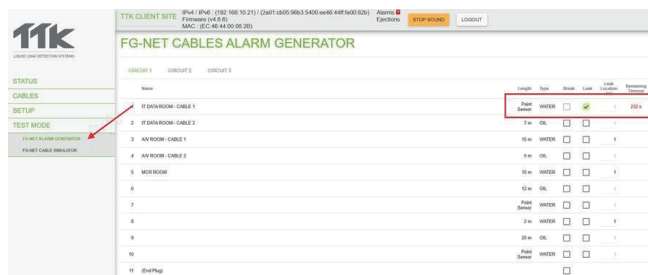
Users can freely define:

- Cable length
- Cable type (Water or Oil)

It is also possible to simulate different events such as:

- Leak alarms
- Cable break alarms

The simulation automatically stops after a limited time or when the panel is rebooted.



■ FG-NET Cables Alarm Generator

This tool allows users to trigger alarms on already configured cables to test system behavior and external communications.

The simulation automatically stops after a limited time or when the panel is rebooted.

